



*Residential Development Land Available*

Andrew Hewitt, Managing Partner  
864.302.7222 | ahewitt@millrockrea.com



**MILLROCK**  
REAL ESTATE ADVISORS



OVERVIEW

Property Type: Development Land for Townhomes or Apartments

Tax Map #: 7-11-15-019.01  
Spartanburg County

Price: Contact Broker

Features

- Trailside development land opportunity for townhouses or apartments
- The 15.73 acre site is positioned in the middle of the busy retail corridor of Westside and Downtown Spartanburg.
- Residents would be less than 5 minutes to I-26 & 10 minutes to I-85, plus Three Creeks trail part of The Dan Morgan Trail System “The Dan” will be accessible from a short walk away from resident’s backyard. PAL Spartanburg has plans to extend multiple branches of the trail throughout area (see trail map in this brochure)
- Over the past 2 years, downtown Spartanburg has experienced tremendous development growth with over \$650 million in projects completed or under construction including the new Spartanburg Minor League Baseball Stadium planned for 2025 season only 5 minutes away from this site.
- Conceptual layouts yielding +/- 44 townhouse lots or 112 apartment units across 4 buildings.
- Additional 11 road frontage lots available see listing on Vanderbilt Rad.
- Full due diligence package available



Andrew Hewitt, Managing Partner  
864.302.7222 | ahewitt@millrockrea.com



112 Unit Apartments - Conceptual Plan



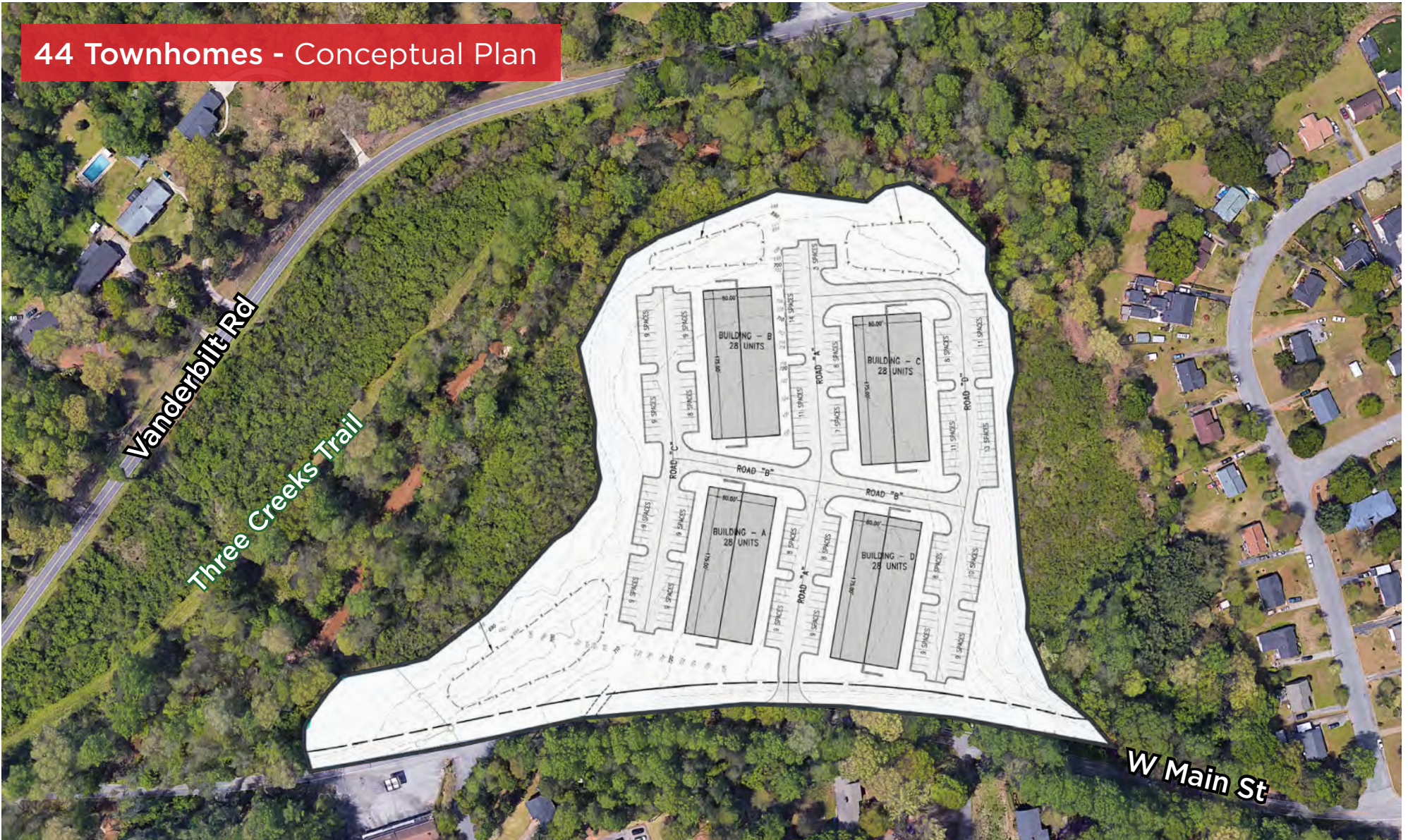
Andrew Hewitt, Managing Partner  
864.302.7222 | ahewitt@millrockrea.com



**MILLROCK**  
REAL ESTATE ADVISORS



44 Townhomes - Conceptual Plan



Andrew Hewitt, Managing Partner  
864.302.7222 | ahewitt@millrockrea.com



**MILLROCK**  
REAL ESTATE ADVISORS



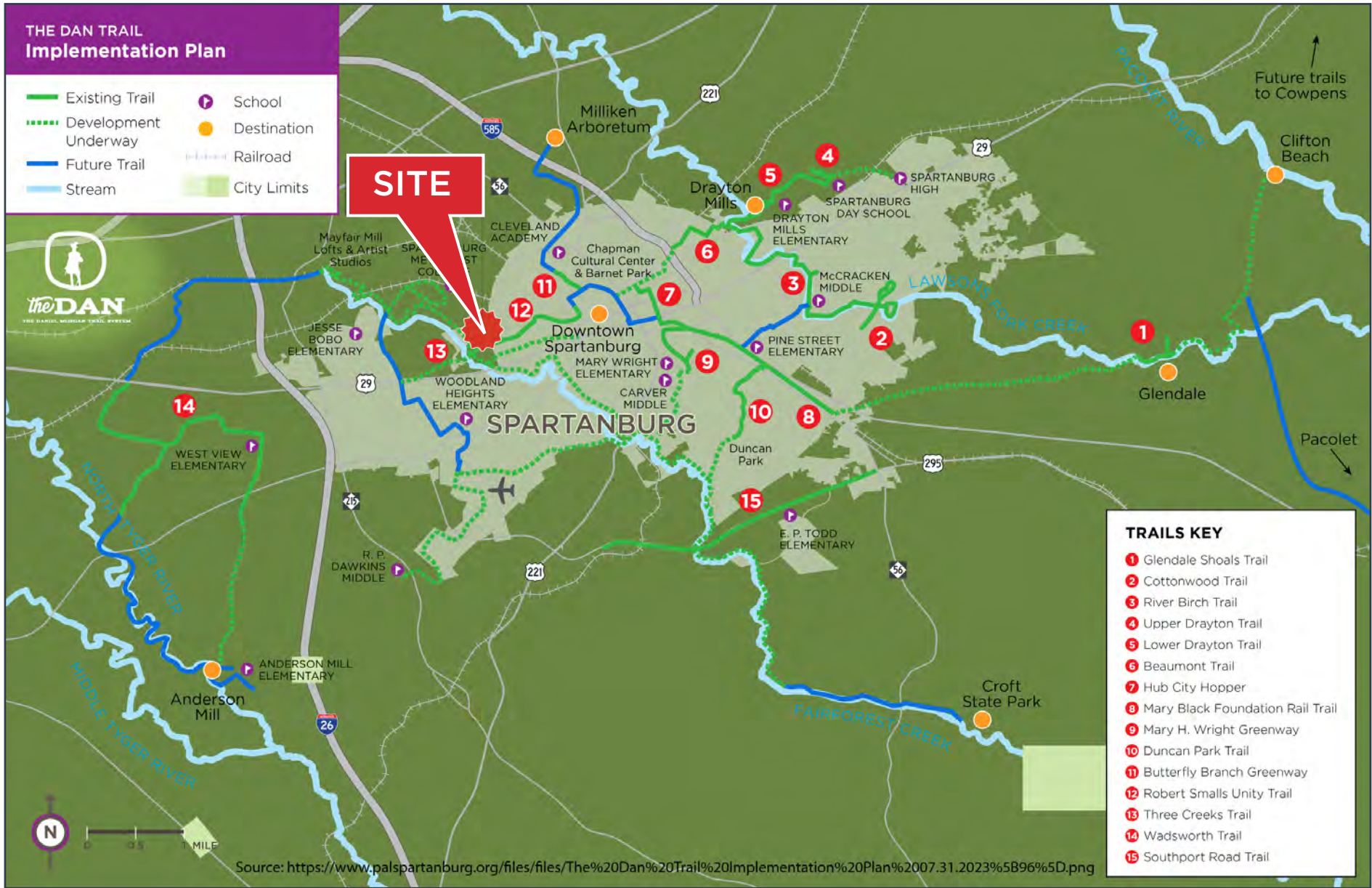


Andrew Hewitt, Managing Partner  
864.302.7222 | ahewitt@millrockrea.com



**MILLROCK**  
REAL ESTATE ADVISORS





Andrew Hewitt, Managing Partner  
 864.302.7222 | ahewitt@millrockrea.com



**MILLROCK**  
 REAL ESTATE ADVISORS